

History Repeating Itself with Our Directors By Kathleen Norris

St Clement's is fortunate that Harriet K. Neal and Marilyn Stassen-McLaughlin have provided us with a good history of the parish from its founding until 1997. One treasure is their recording and passing on some of the things our early rectors have said and done. They also provide us with some little-known facts. Our first rector, the Rev. John Usborne, who served us from 1897-1917 had a private income that allowed him to refuse to accept a salary from the church. When the vestry insisted on paying him \$75 a month, he turned most of it back to the church treasury.

After he retired due to ill health, he continued to attend services at St. Clement's, and the vestry appointed the Rev. Leland Howard Tracy to replace him. Tracy was renowned for his excellent preaching. He served the church from 1917-1920, a time of economic hardship for the parish. Also, in 1918, for the first time in its history, the parish suspended worship services at the request of public health authorities because of a deadly flu epidemic.

When services resumed, attendance had declined, but after Rev. Tracy resigned the new rector, Christopher Stanley Long, attempted to build church attendance by calling on every family listed in the parish directory. While he was our rector he married Ellen Erskine in a ceremony conducted by Bishop Restarick, who had been so important in the early history of the parish.

After Rev. Long resigned due to his wife's ill health the parish was without a rector for a while, but several priests in the diocese took turns conducting Sunday services. Harriet Neal notes that these clergymen "were amazed at the loyalty of a congregation that which Sunday after Sunday filled the church, even when it was not known up to the very hour of service who was to conduct it."

It appears that history does indeed repeat itself, as the parish is in a similar situation today, and relying on supply clergy or Morning Prayer services. One thing the parish has now that it did not have in the 1920's is our two members who were willing to enroll in the diocesan training program for lay leadership in worship and for preaching. Canon Sandy says that the presence of these trained lay leaders will be attractive to anyone seeking to be our next priest.

Above all, St Clements is blessed, as it was some 100 years ago, with a loyal group of members who faithfully attend services, keep our ministries going, help with coffee hour after church, bring the Eucharist to our shut-ins, and serve our young people. Volunteers are always needed, and always welcome, as we begin the next 125 years of our parish life.

Ke 'Alemanaka

Published monthly by
The Parish of St. Clement
1515 Wilder Ave.
Honolulu, HI 96822
(808)955-7745
stclem.org

.....

Want your article or
announcement published?

Submission Deadline:
Third Thursday of the Month
October 19, 2023

STAFF

Head of School: Jodi Yoshioka
Organist: Mark Kennedy
Office Manager: Leesa Steadman
Sexton: Emelio Lanner
Sunday School: Jessica Stack,
Scott & Gail Suzuki-Jones,
Michelle Comeau

Senior Warden: Beth Fincke
Junior Warden: Soane Lino
Treasurer: Martha Morgan
Clerk: Holoua Stender

Vestry

Jane Anderson	Brian Crow
Matthew Chapman	Leslie Isaki
Sarah Palm	Tau'eva Lino
Susan Palmore	Jose Henao

Church Office Hours

Open Weekdays
8:30AM to 4:00PM

**Closed on Holidays*

MAHALOS

Mahalo to September's faithful Food Distribution
crew:

Holo Stender, Beth Fincke, Ann Ogilvie, Annette
Kirkpatrick, Chris Haskaylo. Pam Fern, and
Phoebe Tse.

.....

Mahalo to the crew that prepares and delivers chili
and mac salad to RYSE and YO! House: Jane
Anderson, Karen Brousseau, Robert Nakatsuji,
and Dana Anderson.

.....

ANNOUNCEMENTS

Volunteers are needed for our weekly
Wednesday Food Distribution for helping to
bag groceries and to distribute the food on
Wednesdays from 10AM to noon. Please
ccontact the office if you wish to help.

ZOOM SERVICE OUTLINE

SUNDAY:

Worship at 9:30 AM

ID#: 854 4414 6891

Passcode: 1515

Adult Discussion at 8:30 AM

ID#: 854 4414 6891

Passcode: 1515

Bible Study (RBTL) at 8:30 AM

ID#: 853 8655 3153

Passcode: 1515

Also meets in Parish Hall.

You can join any service with
your phone! Just call this
number: 1 (669) 900-6833
Then enter the meeting ID
and passcode when
prompted.

A Message from Canon Sandy Graham to the Parish of St. Clement

Aloha e Beloved St. Clement's 'Ohana,

I was so privileged to have been with you to Celebrate and Preach a few weeks ago. I know it's been a long period of transition, but as I prayed and talked story with you the continuing persevering spirit and exciting future potential of St. Clement's was so evident. Our period of receiving applications for your next Priest-in-Charge/Rector is nearly over (deadline of September 30th). I have already received many exciting applications, and spoken with those individuals and many more who are discerning and will likely apply as well. In those conversations I get so excited about the bright future in store for St. Clement's. My prayer is that you feel that too. I am assured that God has great plans for you, and you each are a part of those plans! Mahalo for everything, and I look forward to entering into that future together.

Sandy+

The Rev. Cn. Alexander (Sandy) Graham



Sunday Service Schedule

The Vestry voted that the church will continue with one service at 9:30 a.m. until a new priest-in-charge joins our parish. The new pastor will determine the service schedule(s) after arriving.

October 2023

Sunday	Monday	Tuesday	Wednesday	Thursday	Friday	Saturday
<p>1</p> <ul style="list-style-type: none"> 8:30 AM Adult Discussion (PH 1) 8:30 AM RBTL (PH) 9:30 AM Holy Eucharist 9:30 AM Sunday School 10:30 AM Social Time – PH 1:00 PM Tongan Church (CH) 7:00 PM Daily Reflections (PH) 	<p>2</p> <ul style="list-style-type: none"> 8:00 AM SCS Chapel (CH) 1:00 PM Parish Staff Mtg. 5:30 PM Hula Class (PH) 7:30 PM AI–Anon (PH) 	<p>3</p> <ul style="list-style-type: none"> 5:00 PM Labyrinth Open 	<p>4</p> <ul style="list-style-type: none"> 8:00 AM SCS Chapel (CH) 10:00 AM Food Distribution 5:00 PM Na 'Ohana Meeting (SL) 	<p>5</p> <ul style="list-style-type: none"> 4:30 PM Farmers Market 6:00 PM Choir Practice (CH) 	<p>6</p> <ul style="list-style-type: none"> 7:00 PM Tongan Bible Study (CH) 8:00 PM Strivers for Sobriety (PH) 	<p>7</p> <ul style="list-style-type: none"> 9:00 AM Altar Guild (CH) 10:00 AM Compassionate Friends (MR) 6:30 PM Tongan Choir Rehearsal (PH)
<p>8</p> <ul style="list-style-type: none"> 8:30 AM Adult Discussion (PH 1) 8:30 AM RBTL (PH) 9:30 AM Family Sunday 9:30 AM Holy Eucharist 9:30 AM Sunday School 10:30 AM Social Time – PH 1:00 PM Prayer Chain Mtg. 1:00 PM Tongan Church (CH) 7:00 PM Daily Reflections (PH) 	<p>9</p> <ul style="list-style-type: none"> Office Closed Columbus Day Indigenous Peoples' Day 7:30 PM AI–Anon (PH) 	<p>10</p> <ul style="list-style-type: none"> 5:00 PM Property Committee Mtg. 	<p>11</p> <ul style="list-style-type: none"> 8:00 AM SCS Chapel (CH) 10:00 AM Food Distribution 5:30 PM NAMI WOW (PH) 	<p>12</p> <ul style="list-style-type: none"> 4:30 PM Farmers Market 6:00 PM Choir Practice (CH) 	<p>13</p> <ul style="list-style-type: none"> 8:00 PM Strivers for Sobriety (PH) 	<p>14</p> <ul style="list-style-type: none"> 8:30 AM RYSE Meeting (PH) 9:00 AM Altar Guild (CH) 6:30 PM Tongan Choir Rehearsal (PH)
<p>15</p> <ul style="list-style-type: none"> 8:30 AM Adult Discussion (PH 1) 8:30 AM RBTL (PH) 9:30 AM Holy Eucharist 9:30 AM Sunday School 10:30 AM Social Time – PH 1:00 PM Tongan Church (CH) 7:00 PM Daily Reflections (PH) 	<p>16</p> <ul style="list-style-type: none"> 8:00 AM SCS Chapel (CH) 1:00 PM Parish Staff Mtg. 5:30 PM Hula Class (PH) 7:30 PM AI–Anon (PH) 	<p>17</p> <ul style="list-style-type: none"> 5:00 PM SCS Board Mtg. (PH) 	<p>18</p> <ul style="list-style-type: none"> 8:00 AM SCS Chapel (CH) 10:00 AM Food Distribution 	<p>19</p> <ul style="list-style-type: none"> 4:30 PM Farmers Market 6:00 PM Choir Practice (CH) 	<p>20</p> <ul style="list-style-type: none"> 12:00 PM Kūpuna Box 7:00 PM Tongan Bible Study (CH) 8:00 PM Strivers for Sobriety (PH) 	<p>21</p> <ul style="list-style-type: none"> School – Halloween Event 9:00 AM Altar Guild (CH) 10:00 AM Compassionate Friends (PH)
<p>22</p> <ul style="list-style-type: none"> 8:30 AM Adult Discussion (PH 1) 8:30 AM RBTL (PH) 9:30 AM Holy Eucharist 9:30 AM Sunday School 10:30 AM Social Time – PH 1:00 PM Tongan Church (CH) 7:00 PM Daily Reflections (PH) 	<p>23</p> <ul style="list-style-type: none"> 8:00 AM SCS Chapel (CH) 5:30 PM Hula Class (PH) 7:30 PM AI–Anon (PH) 	<p>24</p> <ul style="list-style-type: none"> 5:00 PM Vestry Meeting (PH/Zoom) 	<p>25</p> <ul style="list-style-type: none"> 8:00 AM SCS Chapel (CH) 9:00 AM Yo! House Cooking (KCH) 10:00 AM Food Distribution 	<p>26</p> <ul style="list-style-type: none"> 4:30 PM Farmers Market 6:00 PM Choir Practice (CH) 	<p>27</p> <ul style="list-style-type: none"> 8:00 PM Strivers for Sobriety (PH) 	<p>28</p> <ul style="list-style-type: none"> 9:00 AM Altar Guild (CH) 6:30 PM Tongan Choir Rehearsal (PH)
<p>29</p> <ul style="list-style-type: none"> 8:30 AM Adult Discussion (PH 1) 8:30 AM RBTL (PH) 9:30 AM Holy Eucharist 9:30 AM Sunday School 10:30 AM Social Time – PH 1:00 PM Tongan Church (CH) 7:00 PM Daily Reflections (PH) 	<p>30</p> <ul style="list-style-type: none"> 8:00 AM SCS Chapel (CH) 1:00 PM Parish Staff Mtg. 5:30 PM Hula Class (PH) 7:30 PM AI–Anon (PH) 	<p>31</p> <ul style="list-style-type: none"> Halloween 				

Key:
 CH - Church
 KCH - Kitchen
 MR - Music Room
 PH - Parish Hall
 PL - Parking Lot

MONTHLY PARISH BRIEF

News from St. Clement's School

For this school year, new activities include claytime ceramics, soccer, math music motion, and Hawaiian culture. The campus is now more open to parents so that they can join their students for Chapel, Assembly, birthday celebrations and other events. Upcoming activities include a Halloween program on October 21 and Imagination, the annual fundraiser, which will be held on February 9 at the Japanese Cultural Center.

Admission applications for the 2024-2025 school year have begun. The application period is September 1 to October 31, 2023. A school tour will be held November 22, 2023, and in-person observations are scheduled for January 2, 2024. As of September 19, about 40 applications were received to fill 52 openings.

Parish Happenings

Volunteers Needed to Help with Coffee Hour - There will be a social time each Sunday from 10:30 AM to 11:15 AM for the congregation to connect as a parish, in front of the church.

Volunteers are needed for the upcoming Sunday coffee hours. If you can bring food and help set up and/or clean up for specific upcoming weeks, please contact Tau'eva Lino directly as soon as possible. Your help would be most appreciated.

Sunday School in Session! - Sunday School is in session and accepting keiki from preschool through high school, and we welcome anyone who is interested to come on by!

Campus Security and the Gates - The vestry is pleased to announce that we have finalized arrangements for securing our campus every night – we have engaged the services of David Lucas, who locks the gates every evening at 10:00 p.m. after doing a security sweep of the entire campus to make sure that everything is in order and then opens them at 5:30 a.m. every morning.

Volunteer(s) Needed for Farmer's Market - Pam Fern will be away on Thursday,

October 12, 2023, and we need a volunteer to open and close up the Farmer's Market, which runs from 4:30 p.m. to 7:00 p.m.. If you are able to help, please contact the church office at 808-955-7745 or via email.

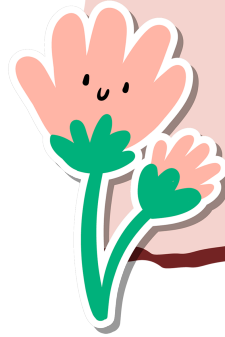


BIRTHDAYS THIS MONTH



- October 5 - Ray Tamura
- October 6 - Chris Hacskaylo
- October 7 - Harrison Ishida
- October 11 - Helena Schaefer
- October 14 - Jaeson Tamura
- October 14 - Erica Yamauchi
- October 15 - Bonnie Rice
- October 15 - Amelia Levy
- October 17 - Danny Schoen
- October 18 - Tau'eva Lino
- October 20 - Andrew Carpenter
- October 24 - Mike Town
- October 29 - Hew Reynolds
- October 31 - Kingsley Wong

October





SCHOOL SNAPSHOTS

A view into the school days at St. Clement's



Students from B1 use their fingerprints to make leaves for their class sign.



Students of B3 work together to complete a puzzle. class.



Students from C3 create their own "Obliteration Room", inspired by the Japanese artist, Yayoi Kusama.



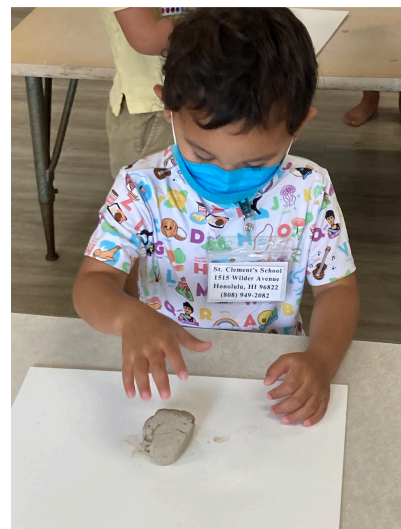
Students and families celebrate Mrs. Yoshioka's birthday early in the month of September.



Students on B2 enjoy swinging on the playground.



Students of C1 enjoy eating their lunch together.



A student of C2 enjoys working with clay.



🌻 Join Our Family Ministries Team as St. Clement's Church Nursery Attendant! 🌻

Passionate about nurturing young minds? Join us every Sunday at St. Clement's Church Nursery!

😊 **Playful Learning:** Create a vibrant space where children grow through play and discovery.

🤝 **Community:** Be part of a welcoming church family that values respect and inclusivity.

👩‍🎓 **Qualities:** Patience, teamwork, and a heart for childcare.

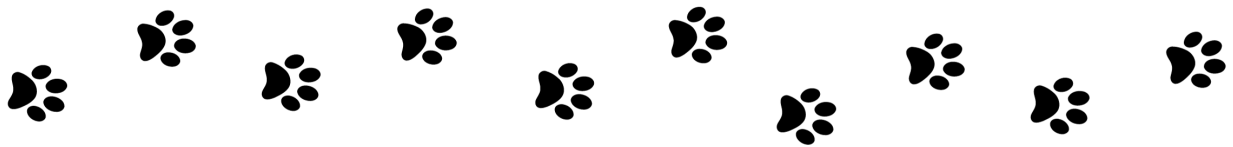
🌟 **Impact:** Inspire and shape the next generation.

Ready to make a difference? Apply now at info@stclem.org and help us care for the next generation!



Blessing of the Animals - Sunday, October 8, 2023

Bring all your animal friends to the 9:30 a.m. service to be blessed by the Reverend Carol Arney. All animals are welcome, preferably on leashes, in carriers, or in your pocket.



Blessing of the Animals



Update about Presiding Bishop Michael Curry's Recovery



News

Presiding Bishop Michael Curry continues recovery in hospital

Following **Wednesday's surgery**, Bishop Curry is awake and talking, and he remains in the intensive care unit of the hospital. Your ongoing prayers for Bishop Curry, his family, and his whole medical team are very much appreciated at this time.

Surgery update on Presiding Bishop Michael Curry

The Office of Public Affairs released **this update** on Wednesday evening after Episcopal Church Presiding Bishop Michael Curry underwent a **scheduled surgery**. More information will be shared as it becomes available.



OCTOBER AT A GLANCE

SUNDAY	MONDAY
Holy Eucharist 9:30AM Adult Discussion 8:30AM Bible Study 8:30AM	Office Open 8:30AM to 4PM
TUESDAY	WEDNESDAY
Office Open 8:30AM to 4PM	Office Open 8:30AM to 4PM Assistance Available 10AM to 12PM
THURSDAY	FRIDAY
Office Open 8:30AM to 4PM Farmers Market 4:30PM to 7PM	Office Open 8:30AM to 4PM Kūpuna Box (10/20) 12PM to 1PM
SATURDAY	SPECIAL EVENTS
	Office Closed: Monday, Oct. 9 Indigenous Peoples' Day