

Ke 'Alemanaka

The Parish Postings

THE PARISH OF ST. CLEMENT
An Inclusive and Caring Christian Community

Vol.91 No.6

June 2020

St. Clement's Worship Services



Dear 'Ohana,

As we enter the next phase of living thru this pandemic together, we will continue to pray in new ways. Beginning this Sunday, June 7 we will be worshipping together both in

person and online at the same time. The full details of this plan are listed on following pages, but here is the short list.

Services will be at 8 am and 10:15 am

If you are coming in person, please:

- 1) Wear a mask
- 2) Do not come if you are sick or might have been exposed.
- 3) Use hand-sanitizer or wash your hands when you arrive at church.
- 4) Maintain at least 6 feet distance from those not in your household.

All services will continue to be available
online via Zoom

Please note that the ID numbers have changed starting this week. They will remain at these numbers thru the end of 2020.

If you are asked for a password, it is 1515

Sunday Services and Adult Discussion

Join Zoom Meeting

[https://us02web.zoom.us/j/85444146891?](https://us02web.zoom.us/j/85444146891?pwd=V3Jnc0ZLREJTMXVhYTINWEJpT1cxZz09)
[pwd=V3Jnc0ZLREJTMXVhYTINWEJpT1cxZz09](https://us02web.zoom.us/j/85444146891?pwd=V3Jnc0ZLREJTMXVhYTINWEJpT1cxZz09)

New Meeting ID: 854 4414 6891

Compline, Tuesdays at 9 pm (online only)

Join Zoom Meeting

[https://us02web.zoom.us/j/82356668373?](https://us02web.zoom.us/j/82356668373?pwd=b2swOHM0MWUxMVpBVDJlT2ZqMDRqUT09)
[pwd=b2swOHM0MWUxMVpBVDJlT2ZqMDRqUT09](https://us02web.zoom.us/j/82356668373?pwd=b2swOHM0MWUxMVpBVDJlT2ZqMDRqUT09)

New Meeting ID: 823 5666 8373

Thursday, Noonday Prayer 12 pm (online only)

Join Zoom Meeting

[https://us02web.zoom.us/j/83976136339?](https://us02web.zoom.us/j/83976136339?pwd=d1l0WF10dGptY1BySmFOR3RMYINZUT09)
[pwd=d1l0WF10dGptY1BySmFOR3RMYINZUT09](https://us02web.zoom.us/j/83976136339?pwd=d1l0WF10dGptY1BySmFOR3RMYINZUT09)

New Meeting ID: 839 7613 6339

To Join by Phone dial anyone of these numbers and enter the Meeting ID of the service you would like to join.

(669) 900-6833
(253) 215-8782
(346) 248-7799
(929) 436-2866
(301) 715-8592
(312) 626-6799

Ke 'Alemanaka

Published monthly by The Parish of St. Clement
1515 Wilder Avenue, Honolulu, Hawai'i 96822-4614
Office Phone: (808) 955-7745
Fax Phone: (808) 944-9325
Email: info@stclem.org
Website: <http://www.stclem.org>

Rector: Rev. Heather Hill
Priest Associate: Rev. George Clifford
Curate: Rev. Ha'aheo Guanson
Head of St. Clement's School: Jodi Yoshioka
Director of Music: Karol Nowicki
Organist: Mark Kennedy
Interim Parish Secretary: Alofa Carpenter
Sexton/Groundskeeper: Stan Ornellas
Family Ministries:
Michelle Comeau and
Gail and Scott Suzuki-Jones
Senior Warden: Michelle Comeau
Junior Warden: Jose Henao
Treasurer: Martha Morgan

Vestry

Mary Carpenter	Chris Hacskaylo
Helena Ishida	Adrienne Lau
Glenn Moir	Amy Schafer
Holoua Stender	

NEW OFFICE HOURS

Due to the COVID-19 outbreak we have revised our office hours.

We will be open on
Mondays and Wednesdays 9am - 12pm

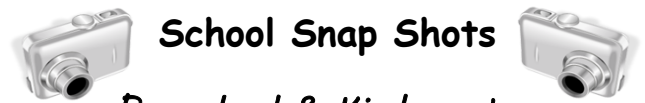
Food & financial assistance will only be available on Wednesdays from 10am to noon

Items for Ke 'Alemanaka may be submitted to the Newsletter Editor, Arthur Buto

Phone: (808) 383-3930
Email (preferred): thebutos@yahoo.com

DEADLINE FOR THE JULY ISSUE

Wednesday, June 15, 2020



School Snap Shots

Pre-school & Kindergarten Drive-Thru Graduation



Congratulations!!!



*Hau'oli la hanau to all those
born in May*

- May 1 Tahmi Broadhead
Portia Fukuoka*
- May 2 Vana Lee*
- May 3 Karen Borg
Elise Nakatsuji*
- May 5 Samantha Chapman
Zoe Chapman*
- May 8 Eva Rogers*
- May 12 Jane Anderson*
- May 15 Walton Shim*
- May 17 Phoenix Lee Tuttle*
- May 18 Christina Markevitch
Jessica Stack
Dorothy Seki*
- May 20 Helen Gary
Helena Ishida*
- May 21 Manny Wong*
- May 22 Lisa Buto
Soane Lino, Jr*
- May 23 Bella Grace Harper*
- May 24 Dana Anderson
Tyler Wong*
- May 28 Leslie Isaki*
- May 29 Kanani Cruz*
- May 30 Jean Overstreet*



*Hau'oli la hanau to all those
born in June*

- June 2 Moria Amjadi*
- June 3 Sandra Kasega*
- June 4 Mary Carpenter
Jodi Yoshioka*
- June 6 Diane Barrett
Moani Crowell*
- June 7 Laura Goemans*
- June 8 Hank Chapin
Brian Crow
Beverly Davis-Amjadi
Carol Taylor Kim*
- June 9 Charles Yung*
- June 14 Rick Gronna*
- June 15 Loi Chang-Stroman*
- June 17 Francis Lum*
- June 18 Elijah Berg
Kailani Berg
Fred Shea*
- June 19 Pastor Heather Hill*
- June 20 Alexander Tan*
- June 23 Waihi Alo*
- June 26 Chaz Hill*
- June 27 Maile Hong*
- June 29 Deborah Candace Love
Emma Waters*
- June 30 Chuck Hill*

If we missed your birthday, please let the office know!

Re-opening In-Person Worship at St. Clement's in June 2020

Beginning in June 2020 we will do our best to provide a **both online and in-person experience**. People may participate in services and group meetings either in person or from home.

Rationale: Some people would like to begin to meet in person, but many do not and should not for health reasons. We will work together to allow everyone to fully participate throughout the Covid-19 pandemic and into the future.

Slow to start is necessary throughout: We will do our best to not put our Ohana at risk. Opening slowly and carefully, willing to take steps back if needed. (not be the guinea pigs)

Who should not attend St. Clement's in-person:

1. Anyone who is sick — err on the side of caution.
 - For example: your nose is running (could be allergies), stay home to keep everyone safe.
2. Anyone with a compromised immune system or considered high-risk.
 - Speak with your healthcare professionals and adhere to their advice/wisdom.
3. Anyone who has travelled off-island in the last two weeks.
4. Anyone who has knowingly been exposed to COVID-19 in the last two weeks.

Requirements for participating in-person at St. Clement's:

1. Wear a mask.
 - Exceptions for children under three years of age.
 - If you need a medical exemption, stay home for at least one month of reopening.
2. Maintain more than six feet from people not in your household at all times.
3. Use hand sanitizer or wash your hands regularly and when you arrive.
4. Affirm that you do not feel sick in any way.
5. Affirm that you have not traveled or been exposed to COVID-19.

What campus looks like when people arrive for Sunday service:

1. Greeted at safe distance in porte-cochere
2. Requirements clearly posted for onsite gathering
3. Wear masks (basket of masks available for those without)
 - If anyone refuses to wear a mask, they will be asked to leave. We will be as safe as possible for everyone. If they refuse to leave, we will call the police to issue a trespass warning (This is the standard campus-wide response for both the school and church).
4. Use hand sanitizer or immediately go to bathroom and wash hands.
5. Verbal instructions to keep social distance at all times.
6. All doors open and fans going to increase air circulation.
7. Tape to mark places to sit.
8. Prayer books/hymnals/handheld fans will be put away until they're safe to use
9. Children's area toys/books will be put away until safe to use.

Liturgical considerations:

1. Offering plate at back of center aisle on stand. (No passing)
2. Two liturgical participants — Clergy and one lay reader.
3. No procession — Service leaders will enter from up front
4. Service limited to 40 minutes to minimize time or exposure
 - Short reflections instead of full-length sermons — Eliminated one reading, no hymns
5. No congregation/choir singing. Music via organ/piano or other instrument.

We will continue to do Morning Prayer at all services, at least through June:

1. Allows all participants virtual and in-person same service access.
 - No one feels pressured to come to receive something "extra".

2. Many increased opportunities to spread germs through communion.
 - Removing masks to consume
 - Speaking over the elements
 - Distributing provides increased risk for distributor to be exposed and therefore expose others
 - Touching common services to “retrieve” elements provides opportunity to spread germs.
3. Enter into more at-risk parts of church slowly (we don’t want to be guinea pigs)
4. Until the late 1970s, Morning Prayer was the standard Sunday service and communion was once a month.

For the time being, services will continue to be at 8AM and 10:15AM:

1. Since we are not having coffee hour and are supposed to limit time “hanging out” on-campus
2. It would make it easier for those on Zoom to remember
3. Easy to be able to go back and forth between in-person and online worship
4. Most predictions I have read say we will be in-and-out of quarantine/stay-at-home orders until a vaccine is widely available.

Extra staffing needs on Sunday mornings:

- Ron will clean/disinfect as many surfaces as possible between services that may have been exposed.
- Alofa will be running a computer with Zoom on it in the front of the sanctuary so participants from home can see, be muted, and face slides of the service. She will also be running Zoom between services at Bible Study.

Other Sunday morning groups:

- Adult Discussion has elected among themselves to continue meeting only via zoom for the time being. We will reevaluate this at the end of June.
- Bible Study/Reading Between the Lines will be doing both/and. They will be meeting in the main Parish Hall for those who wish to meet in person (with doors open if possible to increase circulation of air). Alofa and/or Amy will run the zoom computer for those who wish to participate from home.
- No Coffee Hour
- Sunday School will meet under the music building or other outdoor space on campus. They will begin June 14 — the Sunday after we restart services. They will do their best to social distance, wear masks, and use hand-sanitizer/wash hands often.

Clergy:

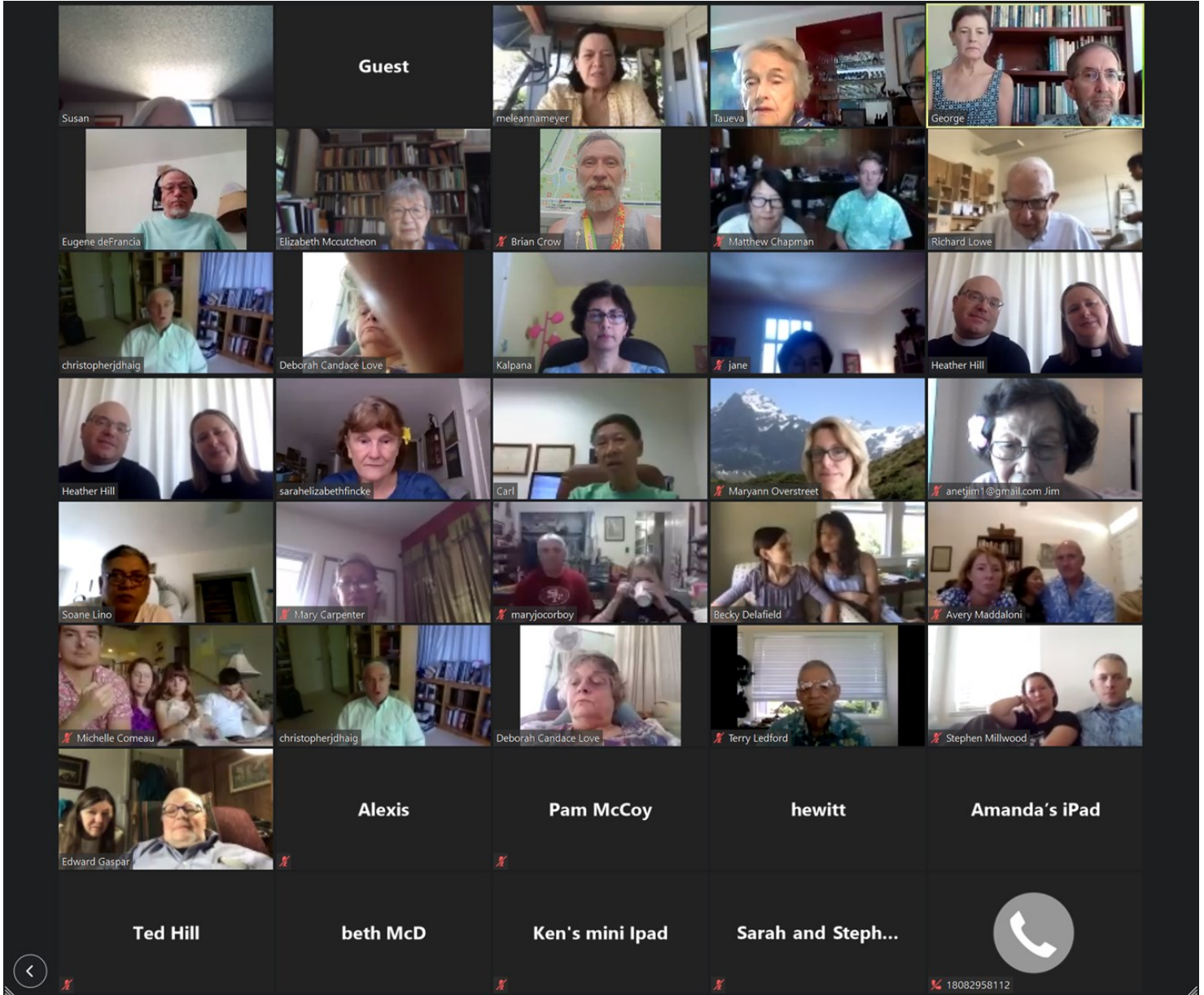
- For the time being only Pastor Heather will be leading services in-person.
- The Rev. George Clifford will be staying home because he is considered high risk.
- The Rev. Ha’aeo Guanson is still recovering from her back injury

When reevaluating:

- Immediate concerns will be addressed by Pastor Heather, as needed.
- Plans will be evaluated at June vestry meeting (6/23) and adjusted as-needed for July.
- If numbers of COVID-19 cases increase greatly or mayor/governor/bishop request, we will return to only online services.



Easter service by Zoom Sunday, April 12, 2020

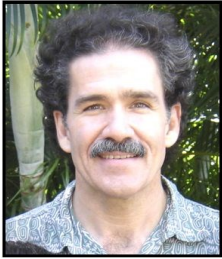


The COVID-19 pandemic continues to present many challenges and changes, some that will pass and some that have changed how we live and perceive our global community. We learned to appreciate community and being in communion with each other, the joys of seeing one another, breathing and speaking (unmuffled), and soon, gathering together. As humans do, we have adapted and coped; we are fortunate to live in a time when we can leverage technology to help bridge some of the gaps. These are some of the intrepid St. Clement's parishioners who gathered on Easter Sunday 2020 to worship and enjoy each other's company in this novel way (pun intended).

A View from the Pew

*“Let there be lights in the dome of the sky to separate the day from the night,
and let them be for signs and for seasons, and for days and for years,
and let the lights in the dome of the sky give light upon the earth.”*

Genesis 1:14-15



As we reopen the economy to support ourselves and one another, it is equally necessary to assess our experiences during this quarantine, in particular its effect on our environment, which has gone largely ignored, with only cursory references to how clean the rivers looked in China before reopening their economy. I cannot speak for other states or countries, but I can describe my experiences here, as someone who loves and lives in Hawai‘i:

- At sunrise, the light from the sun has been almost white instead of a hazy yellow like the bug light on our lanai. The clouds in the sky are often pink, bright yellow and orange, instead of mustard yellow and burnt orange. The sky is so blue.
- At mid-morning, you can see all of the way to the horizon. Instead of the ocean disappearing in a haze and blur, you can clearly see the horizon three miles out, where a dark blue skyline delineates between the sky and the ocean.
- During the day, instead of strangely shaped cirrus and stratus clouds twisting, turning and stretching across the sky in formations in memory not seen before, we are again seeing cumulus clouds, those big white “cotton candy” clouds which bring even the most jaded some joy.
- When it is going to rain, instead of those vast gray cloud banks engulfing entire islands as they were before the economic shut down, we now see singular gray nimbus clouds, riding the winds our way to drop their previous rain.
- At sunset, instead of murky yellow and rusty orange skies, and a hazy and diffused setting sun, we are seeing brilliant blue, pink, orange, and yellow skies, a well-defined and almost white globe of the sun, and that rare “green flash” when the sun disappears beyond the horizon.
- At the beach, the ocean water is clear and clean. I do not I have to shower-off whatever it is that normally clings to my skin before returning home. Where did the plastic rubbish go, in and under the water floating, and on the beach littering? Even the usually mucky waters of Waikiki are luminous.
- Take a deep breath outside. The air is fresh. So fresh that, when driving to the store to get groceries, to the office to gather work for at home, and when checking on the elders in our extended to make sure they are okay, I open the windows, turn off the A/C, and breathe.
- After twilight, you can see the stars. Not just a few, but a multitude. If you turn-off the outdoor lights, lay down on the ground and look up, after your eyes adapt to the darkness, then gradually the constellations far beyond begin to appear.
- To borrow from legendary Folk-Rock songwriter and performer Paul Simon, then there is “the sound of silence,” a symphony of sanity now as opposed to a melody of madness, a certain quiet we have not enjoyed for an entire generation because of the noise pollution.

I read everywhere that we are about to enter an age of a “new normal.” Most read this with deep concern if not dread. Well, if the “new normal” includes what is described above, I am all for it, vaccines or no vaccines, masks or no masks, social distancing or none, more quarantines or not. If we are to survive as a “human” species instead of just another “animal” one, we must create this “new normal” agriculturally, industrially, technologically, environmentally, and socially. A new normal which will strive to accomplish the unmistakable benefits which have, much to our surprise, so quickly formed and revealed themselves to us during our global economic shutdown.

*“See, I have given you every plant yielding seed upon the face of all the earth,
and every tree with seed in its fruit, and you shall have them for food.
Yet, to every beast of the earth, and to every bird of the air,
to every creature which creeps on the earth with the breath of life,
I have given them every green plant for their food.”*

Genesis 1:29-30

~~ Submitted by Scott Suzuki-Jones



the PARISH of St. Clement

Episcopal An Inclusive and Caring Christian Community

1515 Wilder Avenue
Honolulu, Hawai'i 96822-4614

ADDRESS SERVICE REQUESTED



Datebook

Worship Services

Sundays at 8AM & 10:15AM

In-Person and via Zoom

Tuesdays at 9PM

Compline via Zoom

Thursdays at 12PM

Noonday Prayer via Zoom

Mondays & Wednesdays

9am to 12pm Church Office Hours

Thursdays

4:30 pm Farmers Market

New Office Food Pantry Hours

The office food pantry is open on Wednesdays from 10 am to Noon **ONLY**.